

22 Bramwin Court, Brampton

FOR MORE
INFORMATION
PLEASE CONTACT:

Oliver Rathbun
Sales Representative
905-624-4456 Ext. 210
orathbun@binswangerhectare.com



Location: Torbram Road and Steeles Avenue

Building Size: Industrial: 14,235 sq ft
Office: 1,500 sq ft
Total: 15,735 sq ft

Lot Size: 1.25 acres

Clear Height: 20'

Shipping: 2 truck level and 4 drive-in doors

Sprinklers: Yes

Zoning: E3A-335

Heating: Radiant

Sale Price: \$1,925,000

Taxes: \$43,000

Features:

- Outside storage permitted
- 400 amp service split
- Building split down the middle by concrete block wall
- Owner would consider leasing back half of building
- Perfect for user/investor looking for 7,800 sq ft (1 truck-level & 2 drive-in doors) with income
- Precast/steel construction



Binswanger Hectare, Brokerage
1279 Matheson Blvd. E.
Mississauga, ON L4W 1R1
Tel 905-624-4455
Fax 905-624-4458

REGIONAL • NATIONAL •
INTERNATIONAL REAL ESTATE

REGIONAL OPERATIONS:

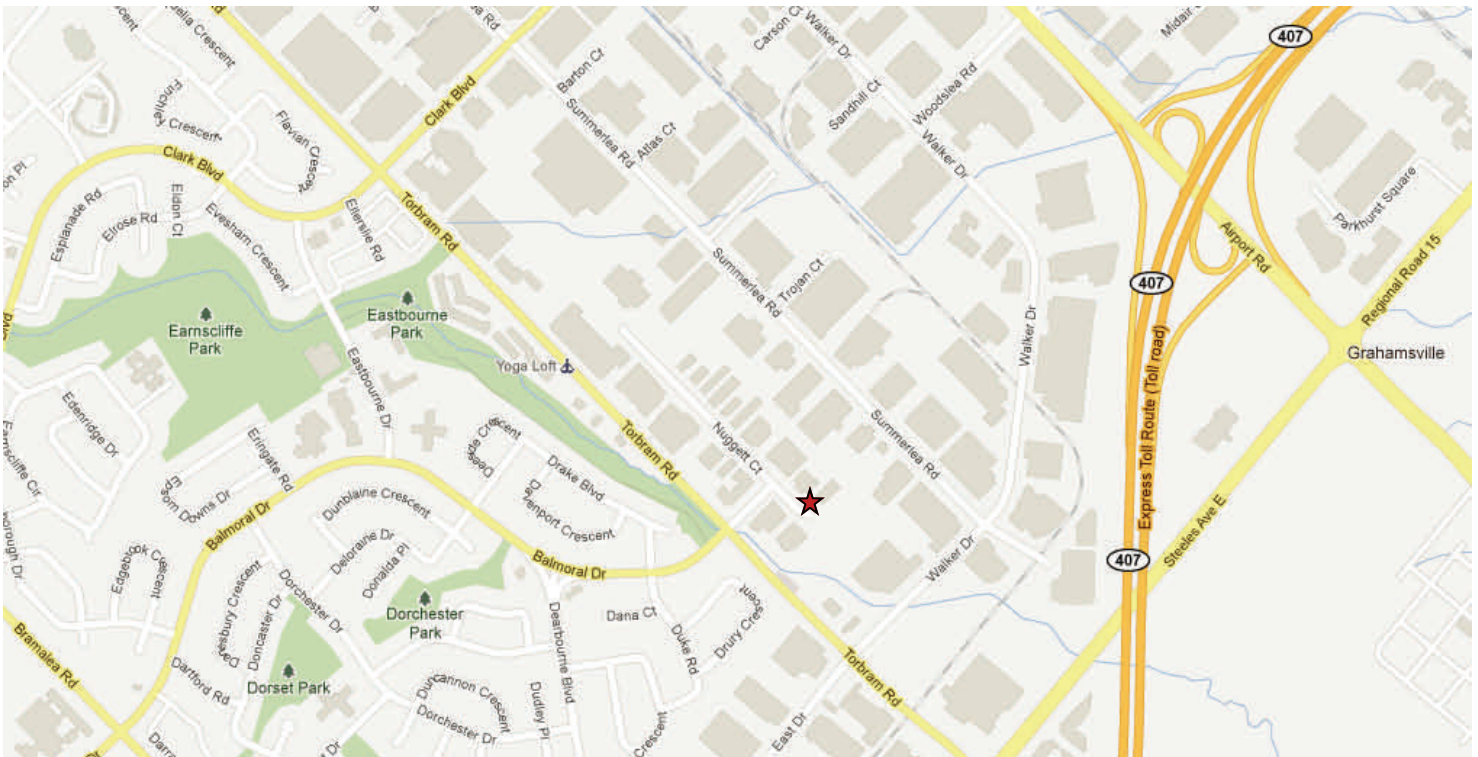
Atlanta, GA • Charlotte, NC • Chicago, IL •
Dallas, TX • Denver, CO • Detroit, MI • King of
Prussia, PA • Los Angeles, CA • Melville, NY •
Meriden, CT • Miami, FL • Minneapolis, MN •
Montreal, Quebec • Morristown, NJ • Nashville,
TN • Natick, MA • New York, NY • North
Haledon, NJ • Owings Mills, MD • Oxford, MS •
Philadelphia, PA • Phoenix, AZ • Tampa, FL •
Toledo, OH • Toronto, Ontario • Valencia, CA •
Vienna, VA

Bangkok • Bogota • Buenos Aires • Caracas •
Copenhagen • Haarlem • Hamburg • Lima •
London • Manila • Mexico City • Mumbai •
Paris • San Juan • Santiago • Sao Paulo • Seoul •
Shanghai • Singapore • Tel Aviv • Tokyo •
Warsaw

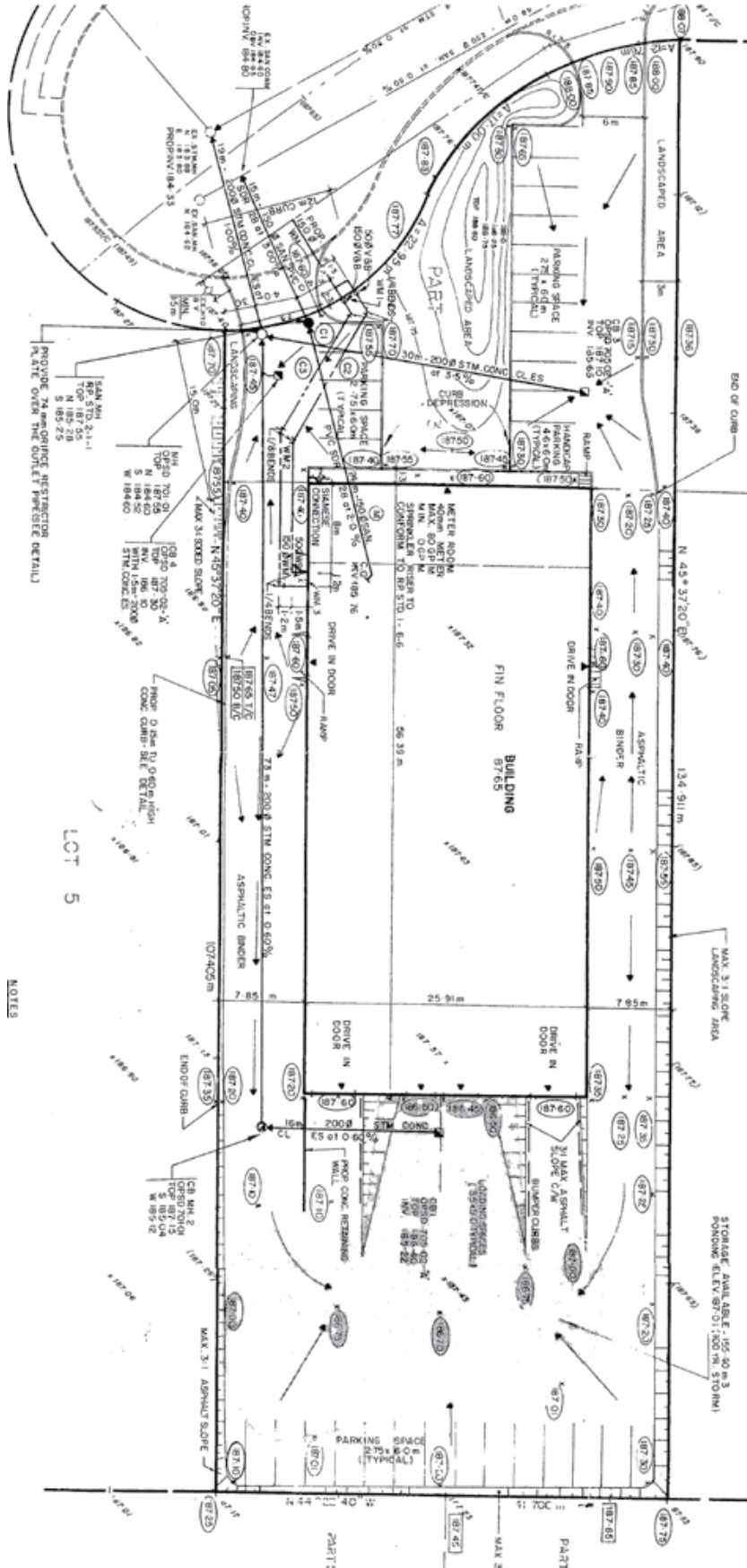
Over 150 Offices Worldwide www.binswanger.com

The information
contained herein

22 Bramwin Court, Brampton



22 Bramwin Court, Brampton



NOTES